

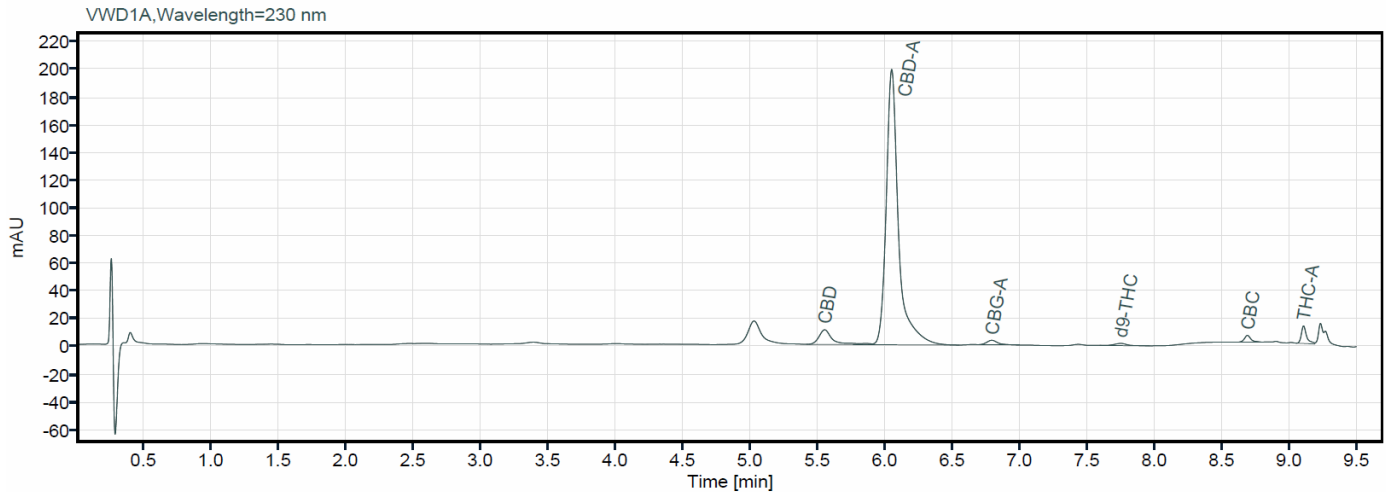
# Certificate of Analysis



Growing with Science

**Customer** Canna Heaven s.r.o.  
**Sample name** Strawberry  
**Sample material** Flower  
**Date of analysis** 20.05.2026  
**Analysis method** HPLC

**Altus Biolabs GmbH**  
Dr.Bohrgasse 2-8/13/1  
A-1030 Wien  
office@altus-biolabs.com  
www.hanfetest.at/



TOTAL Cannabinoids:		13,63 %	
Compound	RT (min)	Concentration (mass %)	
d9-THC	d9-Tetrahydrocannabinol	7.750	0,20
d8-THC	d8-Tetrahydrocannabinol	-	0,00
THC-A	Tetrahydrocannabinolic acid	9.108	0,33
<b>Total Potency (THC content)*</b>		<b>0,49</b>	
CBD	Cannabidiol	5.550	1,18
CBD-A	Cannabidiolic acid	6.048	11,56
<b>Total CBD*</b>		<b>11,32</b>	
CBG	Cannabigerol	-	0,00
CBG-A	Cannabigerolic acid	6.792	0,22
<b>Total CBG*</b>		<b>0,19</b>	
THCV	Tetrahydrocannabivarin	-	0,00
CBN	Cannabinol	-	0,00
CBC	Cannabichromene	8.691	0,14
CBDV	Cannabidivarin	-	0,00
CBDV-A	Cannabidivarinic acid	-	0,00
9S-HHC	9s-Hexahydrocannabinol	-	0,00
9R-HHC	9r-Hexahydrocannabinol	-	0,00

\*For the calculation of total THC, CBD and CBG content the amount of acid form compounds is converted to their respective equivalence sums by multiplying with 0,877.

The results in the test report refer only to the sample actually tested, as received. The laboratory declines all responsibility for the methods of carrying out sampling, transport and storage of the samples until delivery. Do not reproduce this report except in full without the written consent of the laboratory.



ISO 9001:2015

NR.30577/0



**Altus Biolabs GmbH**  
Dr. Bohr-Gasse 2-8/13/1  
1030 Wien  
Tel: +43 880 997 06 29  
E-Mail: office@altus-biolabs.com  
Web: www.hanfetest.at

**Bertram Hausl MSc**

Scientific Director