

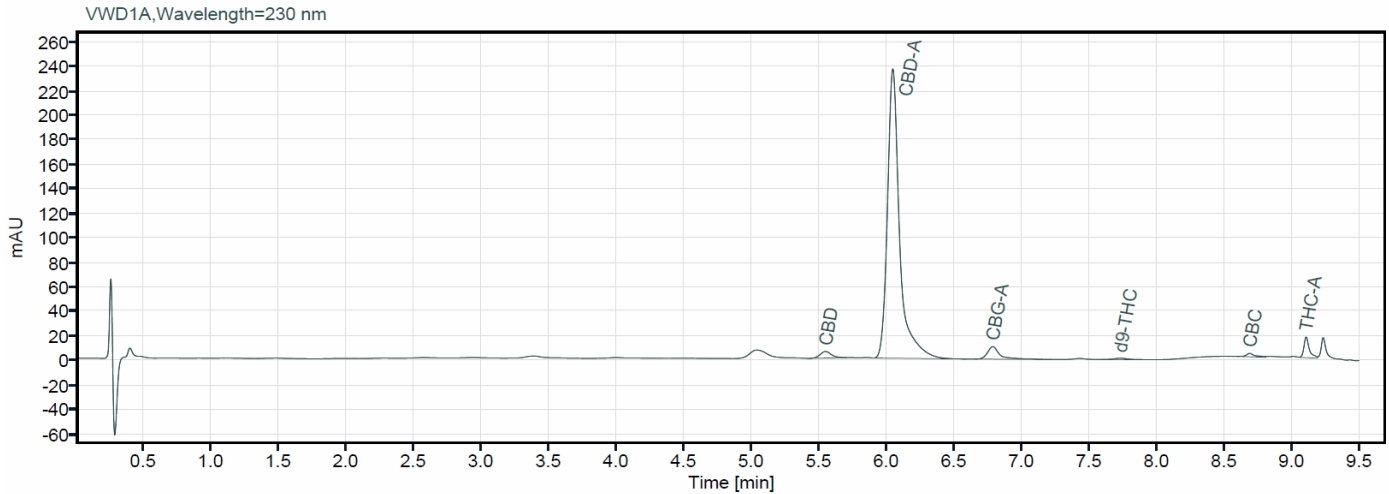
# Certificate of Analysis



Growing with Science

**Customer** Canna Heaven s.r.o.  
**Sample name** Blueberry  
**Sample material** Flower  
**Date of analysis** 20.05.2026  
**Analysis method** HPLC

**Altus Biolabs GmbH**  
 Dr.Bohrgasse 2-8/13/1  
 A-1030 Wien  
 office@altus-biolabs.com  
 www.hanfatest.at/



TOTAL Cannabinoids:			14,48 %
Compound	RT (min)	Concentration (mass %)	
<b>d9-THC</b>	d9-Tetrahydrocannabinol	7.732	0,15
<b>d8-THC</b>	d8-Tetrahydrocannabinol	-	0,00
<b>THC-A</b>	Tetrahydrocannabinolic acid	9.108	0,43
<b>Total Potency (THC content)*</b>			<b>0,53</b>
<b>CBD</b>	Cannabidiol	5.547	0,48
<b>CBD-A</b>	Cannabidiolic acid	6.045	12,72
<b>Total CBD*</b>			<b>11,64</b>
<b>CBG</b>	Cannabigerol	-	0,00
<b>CBG-A</b>	Cannabigerolic acid	6.786	0,59
<b>Total CBG*</b>			<b>0,52</b>
<b>THCV</b>	Tetrahydrocannabivarin	-	0,00
<b>CBN</b>	Cannabinol	-	0,00
<b>CBC</b>	Cannabichromene	8.690	0,11
<b>CBDV</b>	Cannabidivarin	-	0,00
<b>CBDV-A</b>	Cannabidivarinic acid	-	0,00
<b>9S-HHC</b>	9s-Hexahydrocannabinol	-	0,00
<b>9R-HHC</b>	9r-Hexahydrocannabinol	-	0,00

\*For the calculation of total THC, CBD and CBG content the amount of acid form compounds is converted to their respective equivalence sums by multiplying with 0,877.

The results in the test report refer only to the sample actually tested, as received. The laboratory declines all responsibility for the methods of carrying out sampling, transport and storage of the samples until delivery. Do not reproduce this report except in full without the written consent of the laboratory.



ISO 9001:2015 NR.30577/0



**Altus Biolabs GmbH**  
 Dr. Bohr-Gasse 2-8/13/1  
 1030 Wien  
 Tel: +43 660 997 08 29  
 E-Mail: office@altus-biolabs.com  
 Web: www.hanfatest.at

**Bertram Hausl MSc**

Scientific Director